

Child Safety Training



<insert your ecclesia> 2020

**Jesus said, "Let the little children
come to me, and do not hinder them,
for the kingdom of heaven belongs to
such as these."**

Matthew 19:14



Didn't we do this last year?

- Yes!! Each year our Child safety policy is reviewed.
- The Royal Commission into Institutional Responses to Child Sexual Abuse published their final report in 2017 with lots of recommendations for organisations including churches.
- Based on these recommendations, the Australian Association of Christadelphian Ecclesias (AACE) published a Child Safety Policy as a template for Child Safety policies in ecclesias (September 2019).
- NSW has child safety legislation including working with children checks and The Children's Guardian Act.





**WORK
IN PROGRESS**

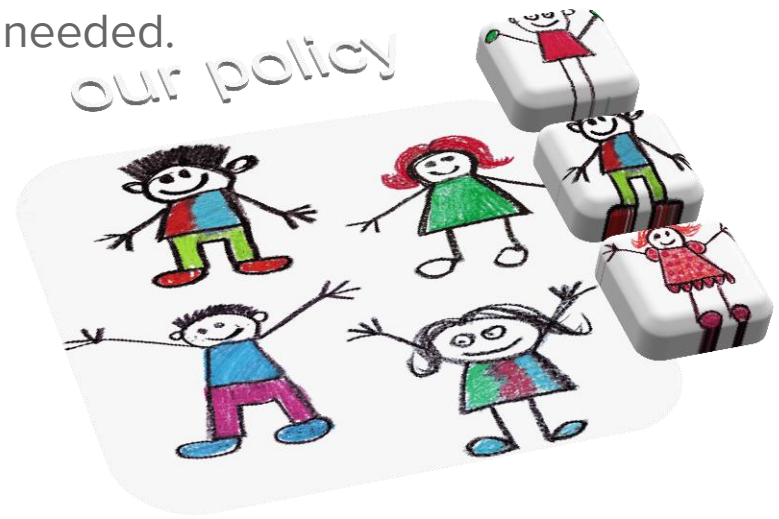
A “child safe” ecclesia

- A child safety policy based on the AACE policy.
- A code of conduct.
- Arranging Committee to discuss child safety at every meeting.
- Working With Children Checks (WWCC) are required for the Arranging Committee, all involved with the Sunday School but particularly Sunday School Teachers as well as all involved in youth activities and other child-related roles. Everyone else is an optional “opt in”.
- Child Safety Officer role who verifies all WWCCs online and keeps the mandatory records.
- Annual training / briefing for everyone.
- A roster for playground supervision.



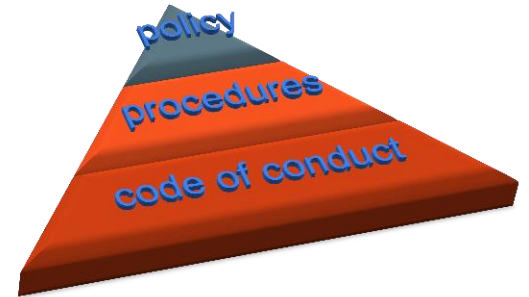
Do we have a children's policy at our ecclesia?

- YES!
- A copy is available in the ecclesial handbook and on our website. |
- It is reviewed each year and updated as needed.



What does the child safety policy cover?

- Our responsibilities as an ecclesia and as individuals in our ecclesia.
- Information on how to recognise signs of abuse.
- Information on how to report an incident or concern about abuse.
- Procedure for how any reports will be handled, including confidentiality.



Who must have a WWCC?

Child Protection (Working with Children) Regulation 2013

Part 2 Clause 13 Religious services

Work for a religious organisation where children form part of the congregation or organisation is child-related work, if the work is carried out:

- (a) as a minister, priest, rabbi, mufti or other like religious leader or spiritual officer of the organisation, or
- (b) in any other role in the organisation involving activities primarily related to children, including youth groups, youth camps, teaching children and child care.

The image shows a screenshot of the 'Application for a NSW Working With Children Check registration' form. The form is titled 'the working with children check' and includes a note: 'PLEASE NOTE: Details you provide in this section must contain your first name and surname in full, and all documents must be current. If the information differs, your proof of identity may not be accepted by Service NSW Centre.' The form is divided into several sections: 'Personal details' (Title, First given name, Other given names, Family name, Gender, Single name only), 'Contact details' (Mobile phone, Home/private phone, Business phone, Email address, Please confirm your email address), 'Current address' (Street address, Suburb/Town, State, Postcode, Mailing address), 'Previous names and aliases' (Have you ever changed your name or used a different name?), 'Birth details' (Date of birth, Town, Country, State/Territory), 'Purpose of check' (Check purpose: Paid employee, Self-employed, Volunteer, authorised carer, adult household member, student on a professional placement, prospective adoptive parent, Child related sector), and 'Identify documentation' (Comprehensiveness of identity document, Reference number, Primary document, Secondary document 1, Secondary document 2). A 'Next' button is visible at the bottom right.



What does the Child Safety Officer do?

- Ensures Working With Children Checks (WWCC) are up to date and everyone who is required to have one by law is up to date and verified.
- Alerts the ecclesia to changes to the laws relating to child safety.
- Someone you can talk to about any concerns or questions you may have.
- Prepares training materials / quiz for the ecclesia to make sure everyone is aware of the policy and procedures.
- Who is currently our Child Safety Officer?
- Who is responsible for Child Safety in our ecclesia?



What is reportable conduct?

- Reportable conduct is defined as a sexual offence, sexual misconduct, ill treatment, neglect, assault offence under 43B or 316A of the Crimes Act 1900 and behaviour that causes significant emotional or psychological harm to a child.
- The Recorder is responsible for making reports as the ecclesial “head of entity”; see the NSW reportable Conduct Scheme.



How can you help to make our ecclesia child safe?

- Participate in annual training and keep up to date on the child safe policy.
- Keep your Working With Children Check and contact details up to date.
- Supervise the playground, act as hosts at children / youth activities, consider child safety when planning all ecclesial activities (especially any overnight).
- Be alert to any unusual behaviour or signs of concern in our children and young people; listen to their concerns.
- Raise issues, concerns or questions with the Child Safety Officer or the Arranging Committee or report incidents directly.
- Time to complete a quiz

